

## RJI RJ45 jack 10/100 Mbit LED angl. LV

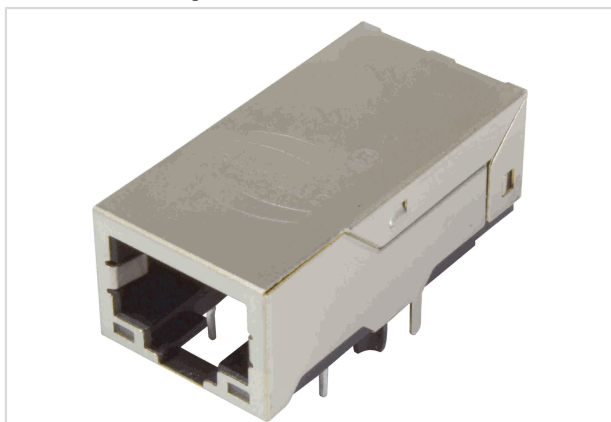


Image is for illustration purposes only. Please refer to product description.

Part number	09 45 551 1152
Specification	RJI RJ45 jack 10/100 Mbit LED angl. LV
HARTING eCatalogue	<a href="https://b2b.harting.com/09455511152">https://b2b.harting.com/09455511152</a>

### Identification

Category	Connectors
Series	HARTING RJ Industrial®
Identification	Magnetics
Element	Female
Specification	RJ45 with integrated transformer Angled

### Version

Termination method	Reflow soldering termination (THR)
Shielding	Fully shielded, 360° shielding contact
Number of contacts	8

### Technical characteristics

Rated voltage	60 V DC
Data rate	10 Mbit/s 100 Mbit/s
Limiting temperature	-40 ... +85 °C
Mating cycles	≥750
Degree of protection acc. to IEC 60529	IP20

### Material properties

RoHS	compliant
ELV status	compliant



**Pushing Performance**  
Since 1945

## Material properties

China RoHS	e
REACH Annex XVII substances	Not contained
REACH ANNEX XIV substances	Not contained
REACH SVHC substances	Not contained

## Specifications and approvals

Approvals	DNV GL
UL / CSA	UL 1977 DUXR2.E254191 CSA-C22.2 No. 182.4, No. 233-09 DUXR8.E254191

## Commercial data

Packaging size	40
Net weight	9.25 g
Country of origin	China
European customs tariff number	85366990
GTIN	5713140224421
eCl@ss	27460201 PCB connector (board connector)